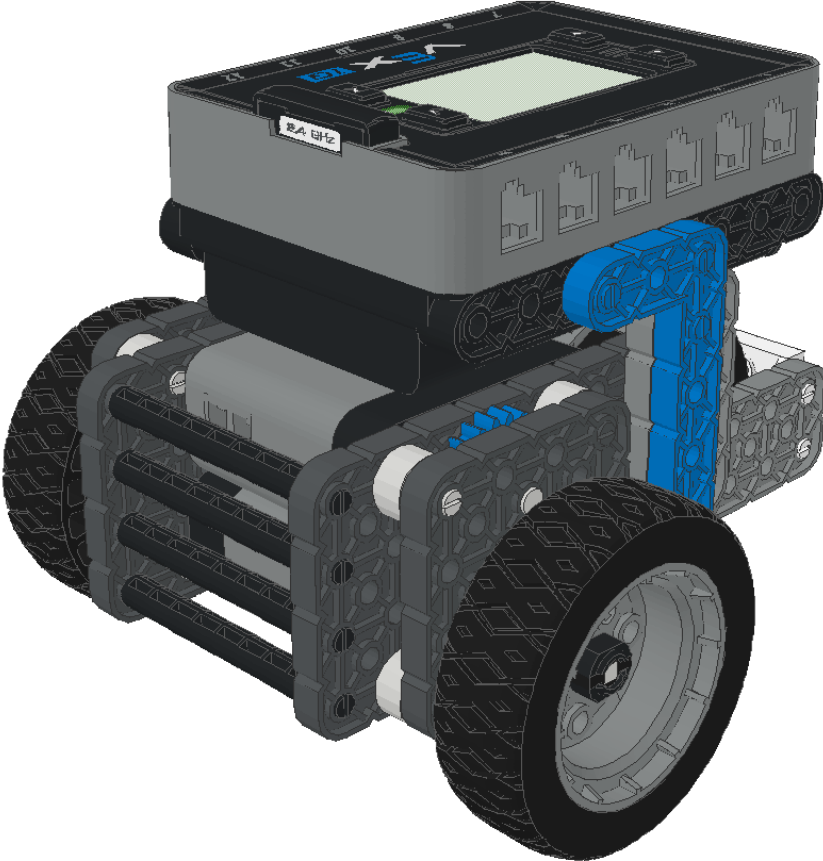
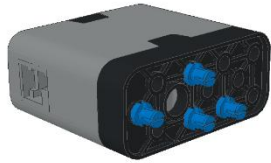


Azeban Mini Driver Instructions



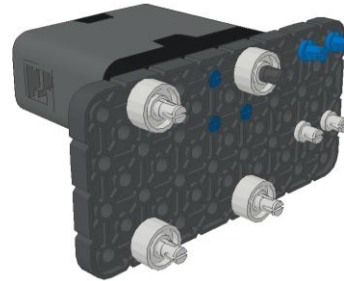
Mini-Drive Chassis – Left Motor Subassembly

Step 1



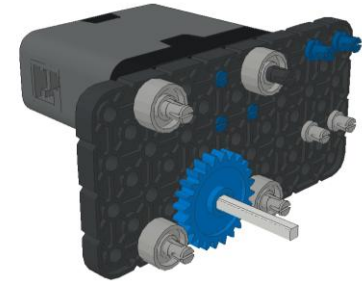
Place 4 Connector Pins as shown into the Motor.

Step 2



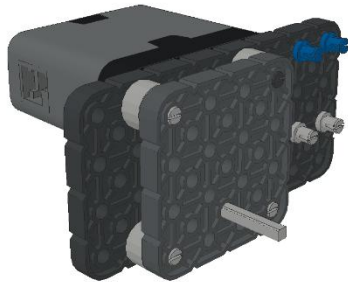
Attach 4x8 Plate, add (3) additional 1x2 Pins with 1x1 Beams, and (1) 2x2 Pin with a 1x1 Beam, forming a riser for the cover 4x4 Plate in Step 4.
Attach (2) 1x2 Pins and (2) 1x1 Pins as shown.

Step 3



Insert 3x Pitch Capped Shaft from Motor side of 4x8 Plate, Place 24 Tooth Gear onto Shaft.

Step 4



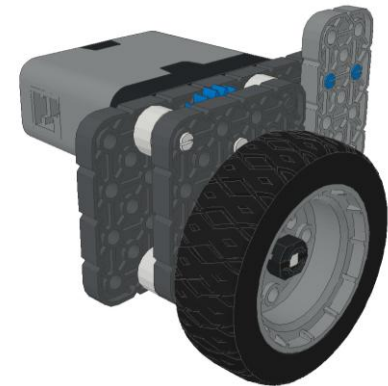
Attach 4x4 Plate as shown.

Step 5



Carefully insert 2x Pitch Capped Shaft and 24 Tooth Gear into Gearbox and securing the shaft to the motor.
Place Rubber Shaft Collar on Wheel Shaft.
Attach 2x4 Beam as shown.

Step 6



Attach 200mm Travel Tire, secure with Rubber Shaft Collar.

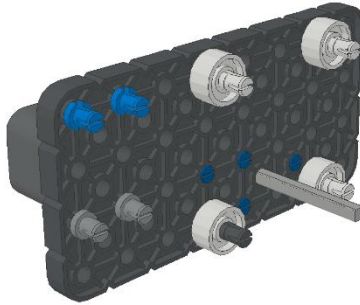
Mini-Drive Chassis – Right Motor Subassembly

Step 1



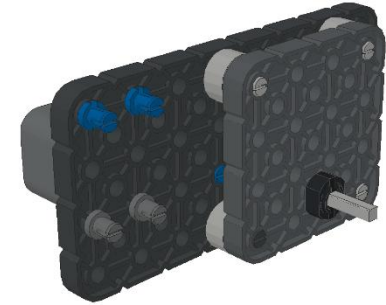
Place 4 Connector Pins as shown into the Motor.
Place 3x Pitch Motor Shaft in Motor

Step 2



Attach 4x8 Plate to Motor
Attach to the 4x8 Plate (3) additional 1x2 Pins with 1x1 Beams, and (1) 2x2 Pin with a 1x1 Beam (*Connects to Motor*).
Attach (2) 1x2 Pins and (2) 1x1 Pins as shown.

Step 3



Attach 4x4 Plate as shown.
Place Rubber Shaft Collar on Wheel Shaft.

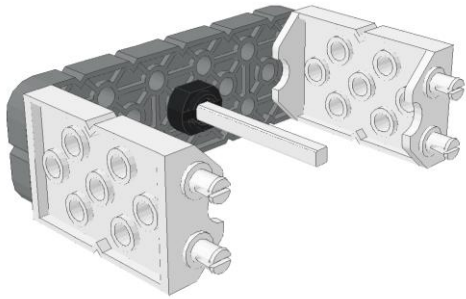
Step 4



Attach 2x4 Beam as shown.
Attach 200mm Travel Tire, secure with Rubber Shaft Collar.

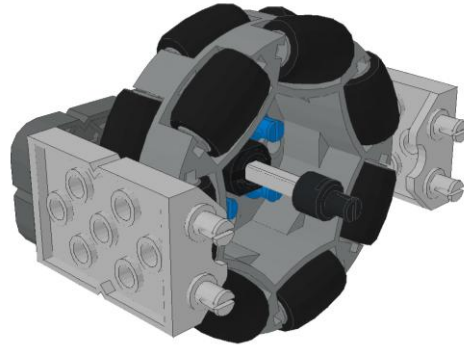
Mini-Drive Chassis – Rear Wheel Subassembly

Step 1



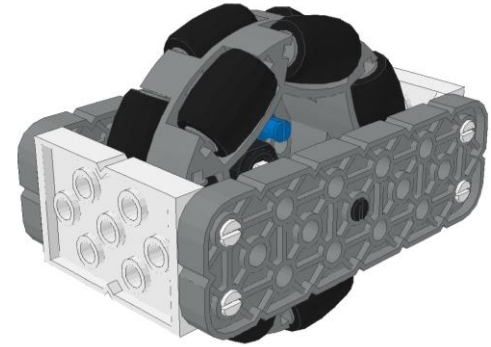
On a 2x6 Beam, connect (2) Double 2x Wide 2x2 Double Offset Corner Connectors – orientated as shown.
Place a 3x Pitch Motor Shaft with a Rubber Shaft Collar.

Step 2



Carefully place a 200mm travel Omni-Directional Wheel on the previously placed shaft.
Place 0.5x Pitch Standoff Extender on Shaft.

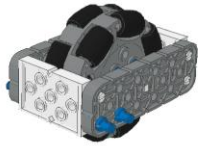
Step 3



Attach 2x6 Beam

Mini-Drive Chassis – Left Motor Subassembly

Step 1



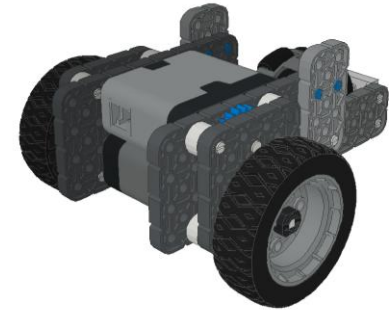
Attach (4) 1x1 Connector Pins to Rear Subassembly
(symmetrical placement)

Step 2



Attach Right Subassembly to Rear Subassembly.

Step 3



Connect Left Subassembly to Rear Subassembly.

Step 4



Attach Brain by using (2) 3x5 Right Angle Beams with
(8) 1x1 Pins.
Connect 200mm Cables from Brain to both Motors:
Left Motor (Top) to Port #
Right Motor (Bottom) to Port #

Step 5



Use up to (4) 4x Pitch Standoffs to create a guard for
the cables.